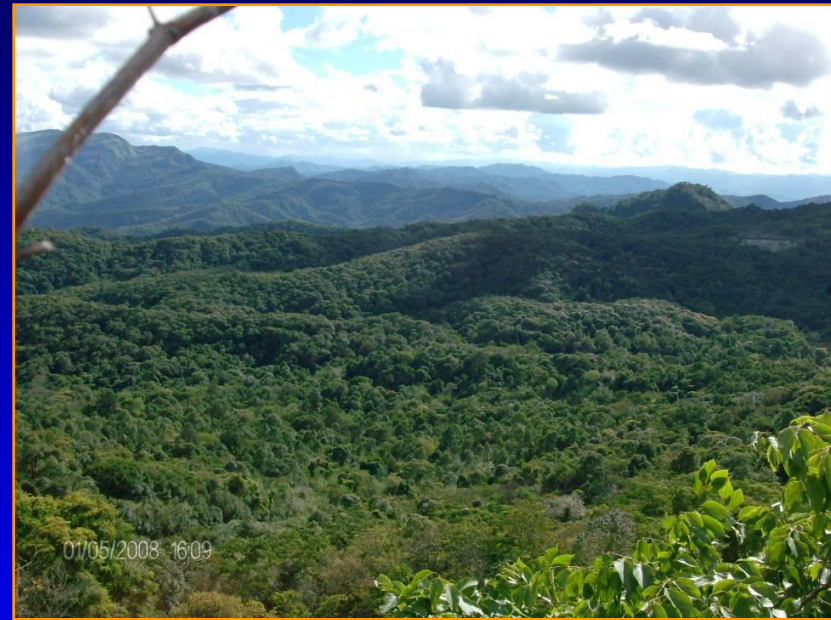


FIRST AMC on Tiger Conservation

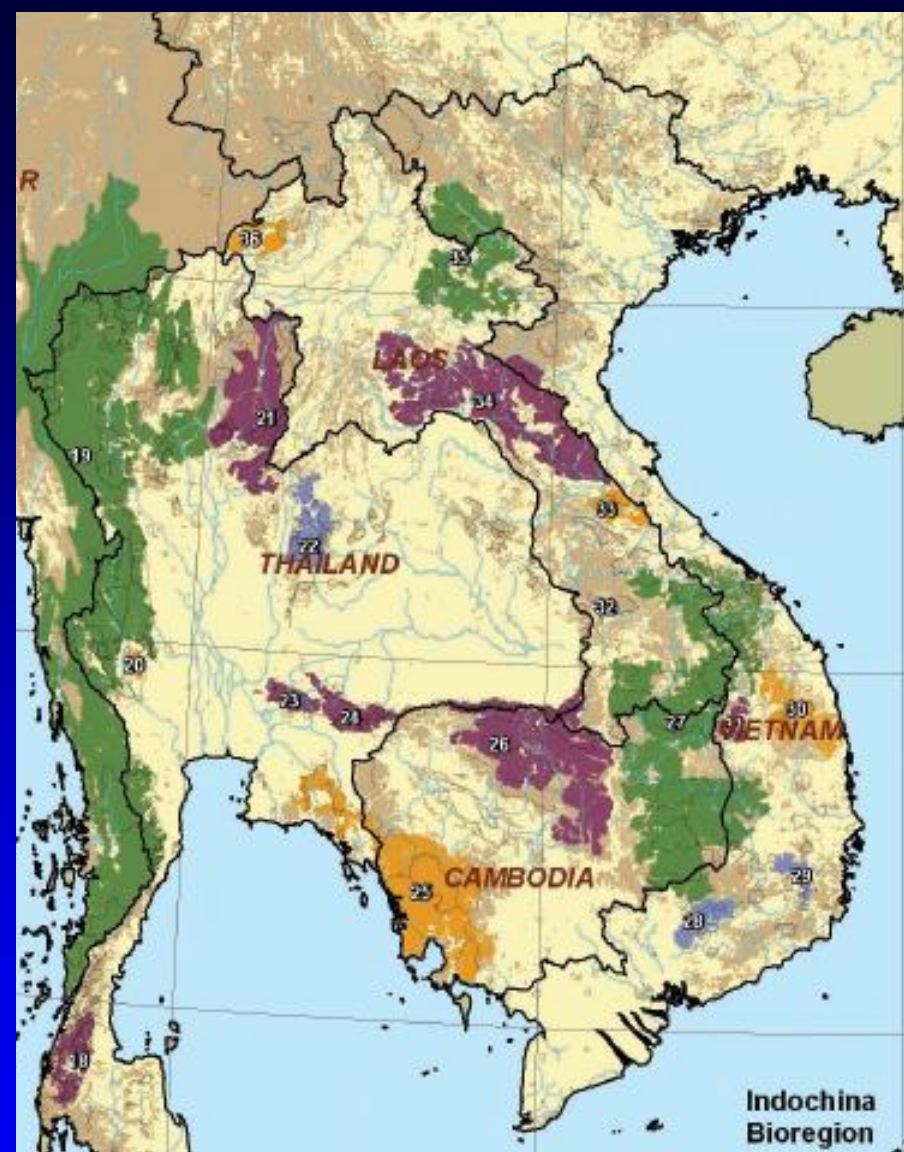
27-30 JAN 2010, HUA HIN, THAILAND



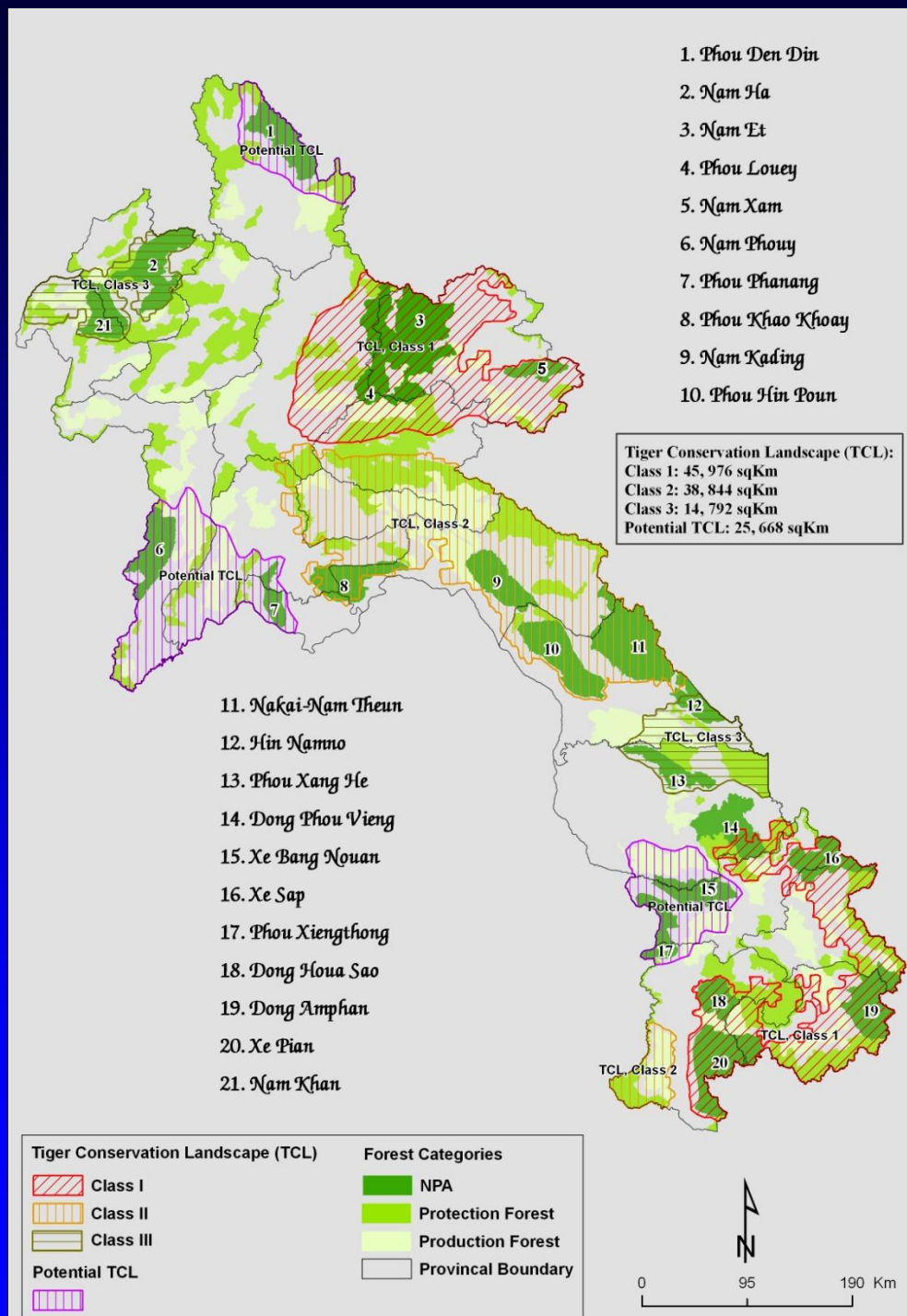
Post-Kathmandu Strategy and Status Report- LAO PDR

Presented by: Bouaphanh Phanthavong





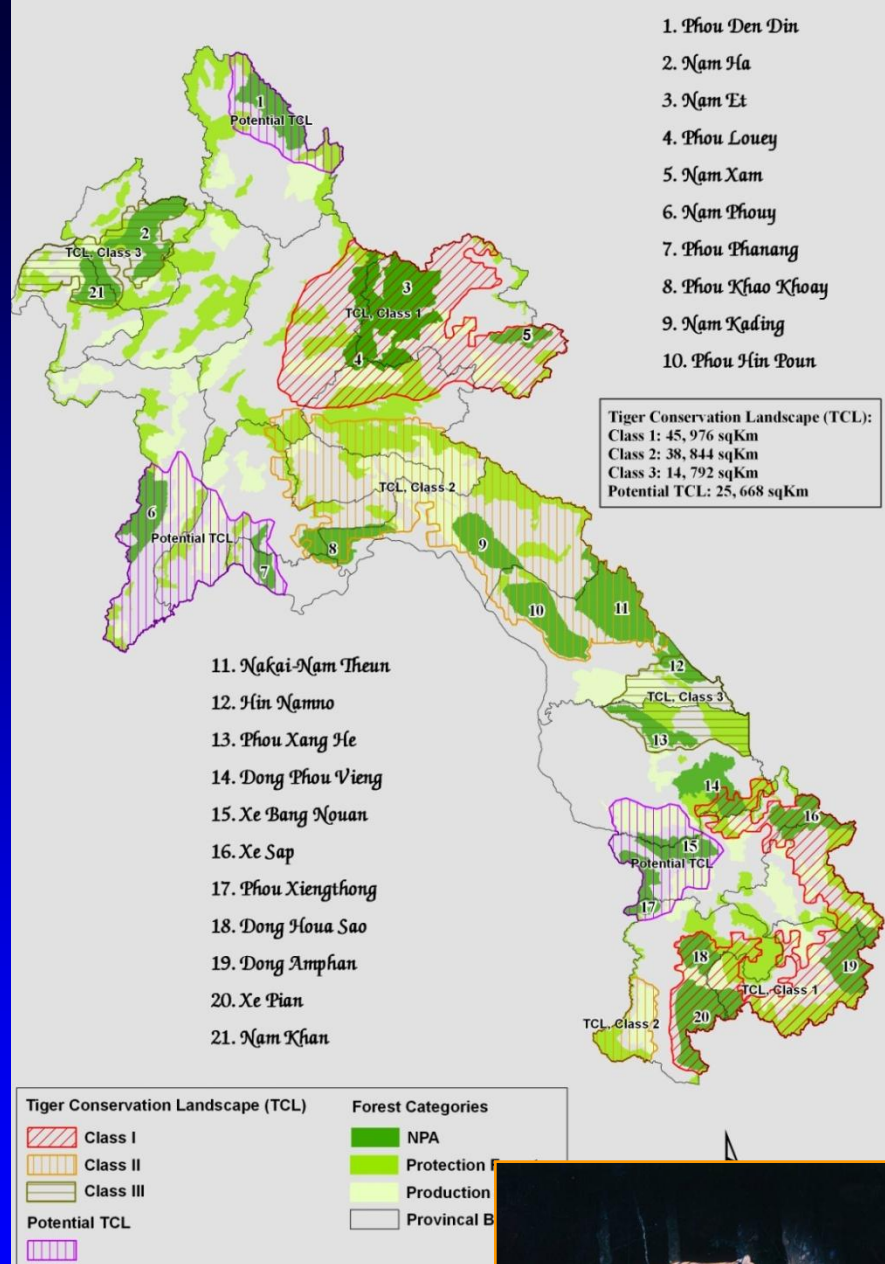
Tiger Conservation Landscapes in Laos





Goal

recover and maintain viable breeding populations of tigers in all Class 1 and 2 tiger landscapes, and to ensure connectivity between all tiger landscapes in Lao PDR, by 2020



Objectives

1. Increase public awareness and support for the recovery and conservation of wild tigers and their habitats
2. Identify and demarcate totally protected zones (TPZs) in protected areas and corridors for connectivity between TPZs in TCLs



Continue...

3. Increase and make effective the enforcement of national regulations and international conventions to stop killing of tigers and to regulate illegal harvest and trade of tiger prey
4. Strengthen protected area organization, capacity and sustainable financing to effectively implement management activities to reduce threats to tigers and prey at priority source sites in Class 1 and 2 tiger conservation landscapes

Continue...

5. Increase national cross-sectoral cooperation for the recovery and conservation of wild tigers and their habitats
6. Increase international cooperation to reduce the illegal trade of tiger and prey to neighboring countries
7. Monitor and reduce human-tiger conflict in tiger conservation landscapes

Key recommendations relevant to the country

- Recommendation (2) - ensure restriction of wild tigers and their core breeding areas
- Recommendation (4) – careful consideration on financing development projects that adversely affect tiger habitats.

Continue...

- Recommendation (8) – enhance capacity of wildlife enforcement networks to combat wildlife trade at national & international levels.



Post-Kathmandu discussion



- Nov, 2009 – present KU' result to representatives from DoFI, CITES Scientific and management authorities, World Bank, WCS, WWF, IUCN, Police
- Nov 31st to Dec 1st – brief 50 participants the KU discussion at National Tiger Action Plan workshop (including Gov. enforcement agencies, infrastructures, WCS, WWF, IUCN, World Bank)

Outstanding efforts to KU Recommendations

- Recommendation (9) – outreach to targeted audiences to reduce demand for tiger parts.
- 25th SEA Games in Vientiane - Dec. 2009



Outstanding efforts to KU Recommendations

- *Recommendation (8) :*
 - In Mid-January, worked with ASEAN-WEN developing strategy on national capacity building for Law enforcement agencies.

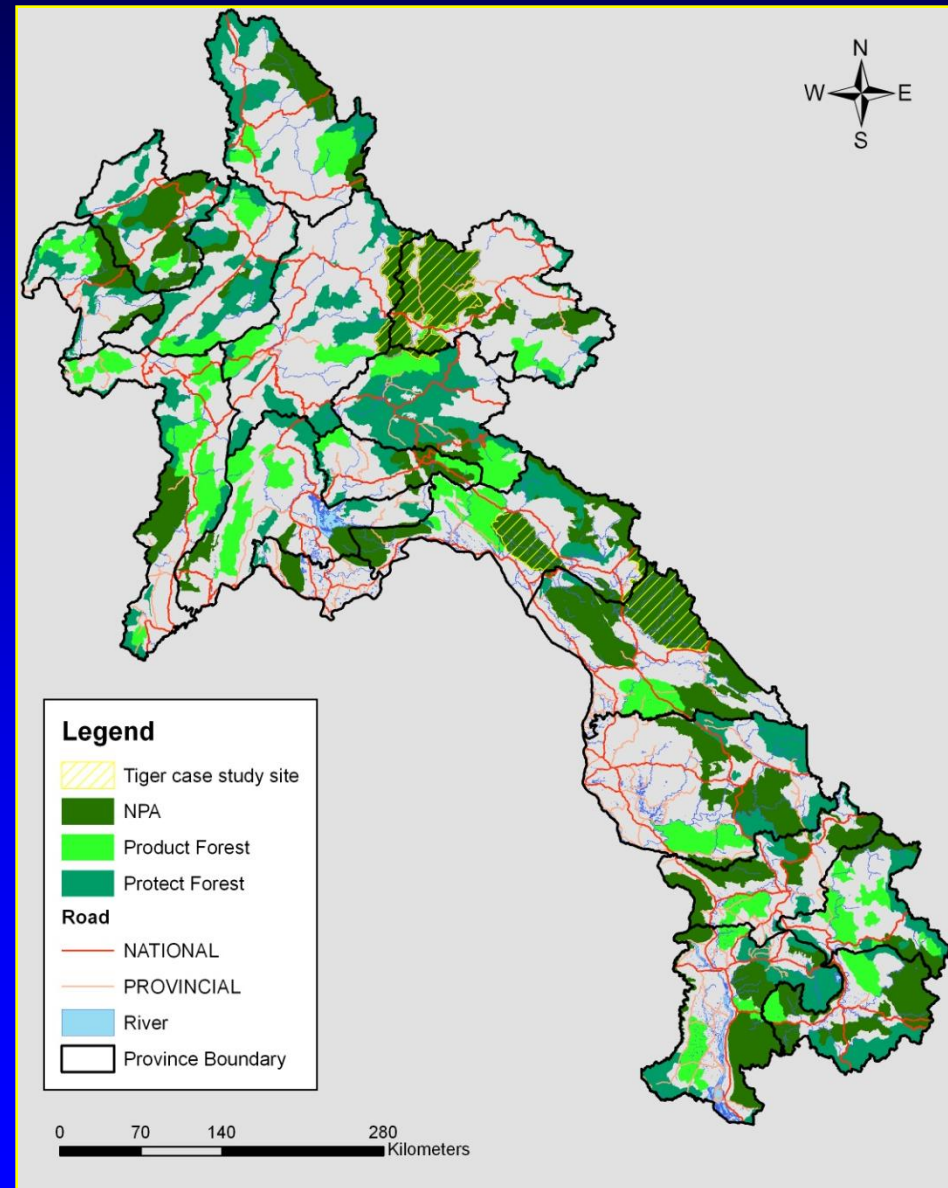
Status of game changing actions

1. Administration and supporting legislation

- GOL continues to support the establishment of Provincial Protected Area Management Division
- Developing new Prime-Minister's decrees on forest and wildlife conservation
- Developing new national regulation on wildlife farms
- Preparation for joining the Global Tiger Forum

2. Improve PA management

- GOL supports PA management in key national PAs (Nam Et-Phou Louey, Nam Kading, Nakai-Nam Theun, Xe Piane).



3. Financial Supports

- GOL continues financial supports for all 21 national PAs
- GOL working with IUCN to study the feasibility of developing a sustainable financing mechanism
- GOL negotiate with international partners such as GTZ, DED, KFW (German Bank) to implement REDD projects

4. Regional Cooperation

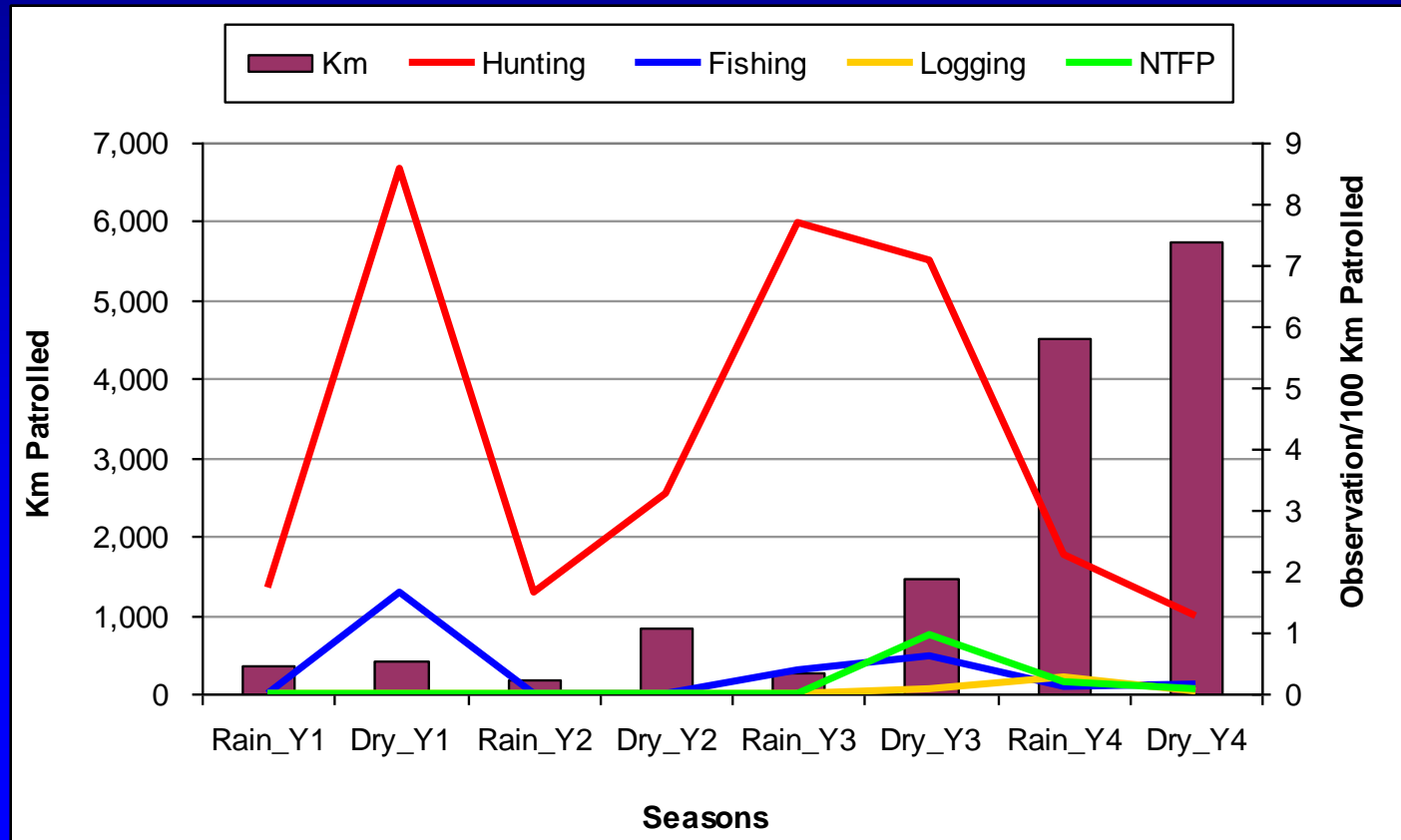
- Work with ASEAN-WEN and other international partners raising public awareness to stop trade in tigers
- GOL signed MOU with Chinese Gov. to strengthen trans-boundary PA management.



Monitoring of Key Progress Indicators

- Management Effectiveness Tracking Tool (METT) – developed by WB, periodically administered in all National PAs to monitor progress of management indicators.

- Monitoring Enforcement System (MIST) – used in three national PAs to monitor threat and performance indicators (including Nam Et-Phou Louey, Nam Kading, Nakai-Nam Theun)



- Tiger and Prey monitoring – using camera traps, DNA analysis, occupancy-based prey survey



- Indicators of rates of deforestation and forest degradation to assess habitat loss over time at priority sites (Nam Et-Phou Louey)

