

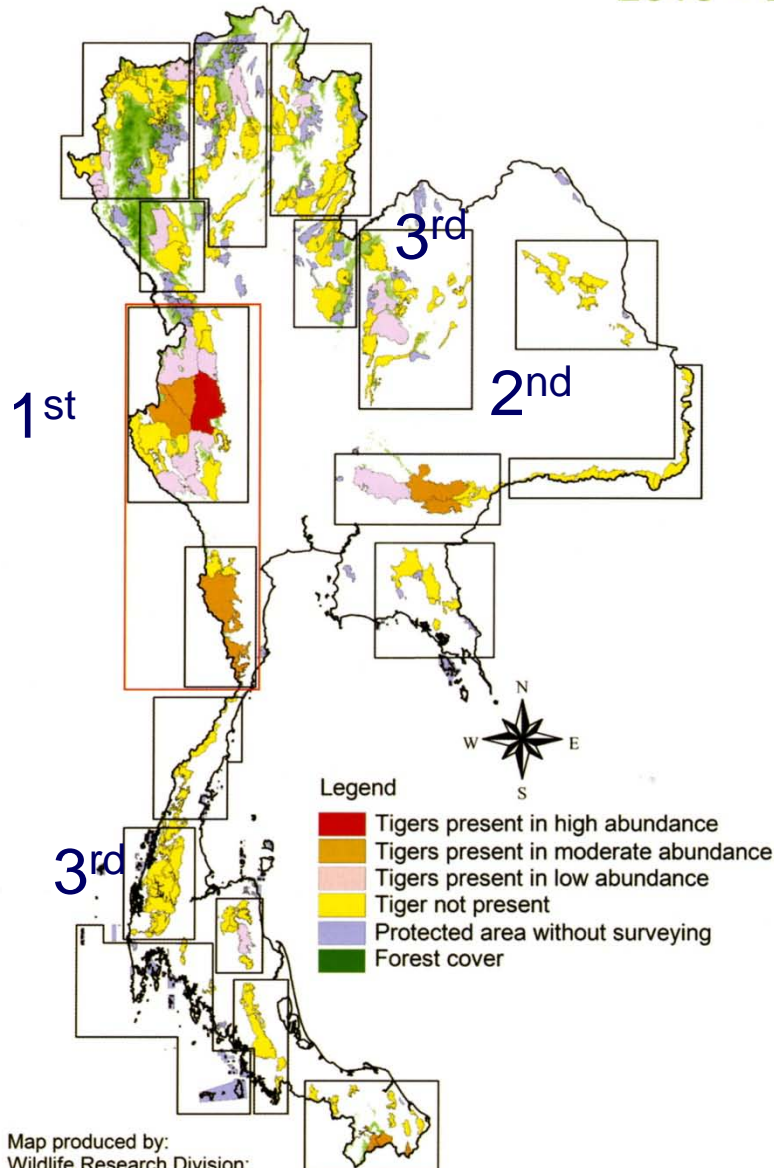
MONITORING THE STATUS OF TIGERS AND THEIR HABITAT IN THAILAND



Department of National Parks, Wildlife and Plant Conservation

CURRENT STATUS & PRIORITY OF TIGER RECOVERY IN THAILAND

2010 - 2022



Thailand's NTRP (2010 – 2022)

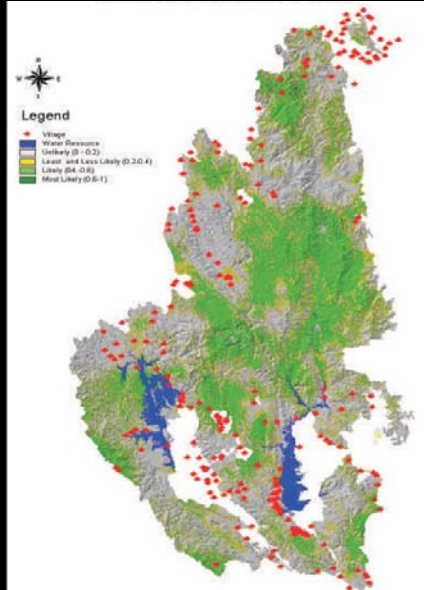
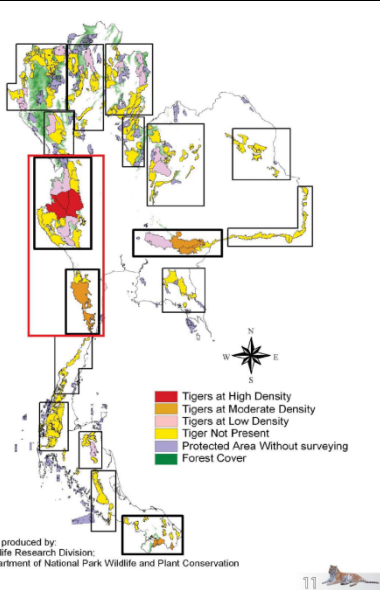
1st Priority tiger source site for recovery
Huai Kha Khaeng & Thung Yai Wildlife Sanctuaries

1st Priority landscape
Western Forest Complex & Tenasserim landscape

2nd Priority landscape
Khao Yai – Dong Phayayen FC

3rd Priority landscape
Phukhew & Klongsang FC

A framework for monitoring tigers at different “scales”

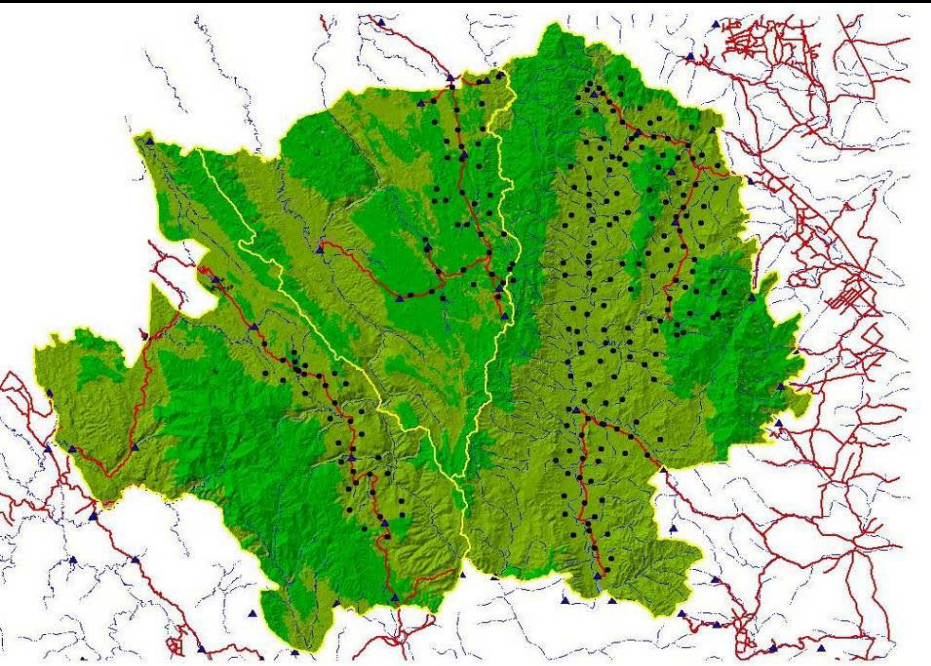


- Mapping **distribution** of tigers and prey species at regional/ countrywide scales

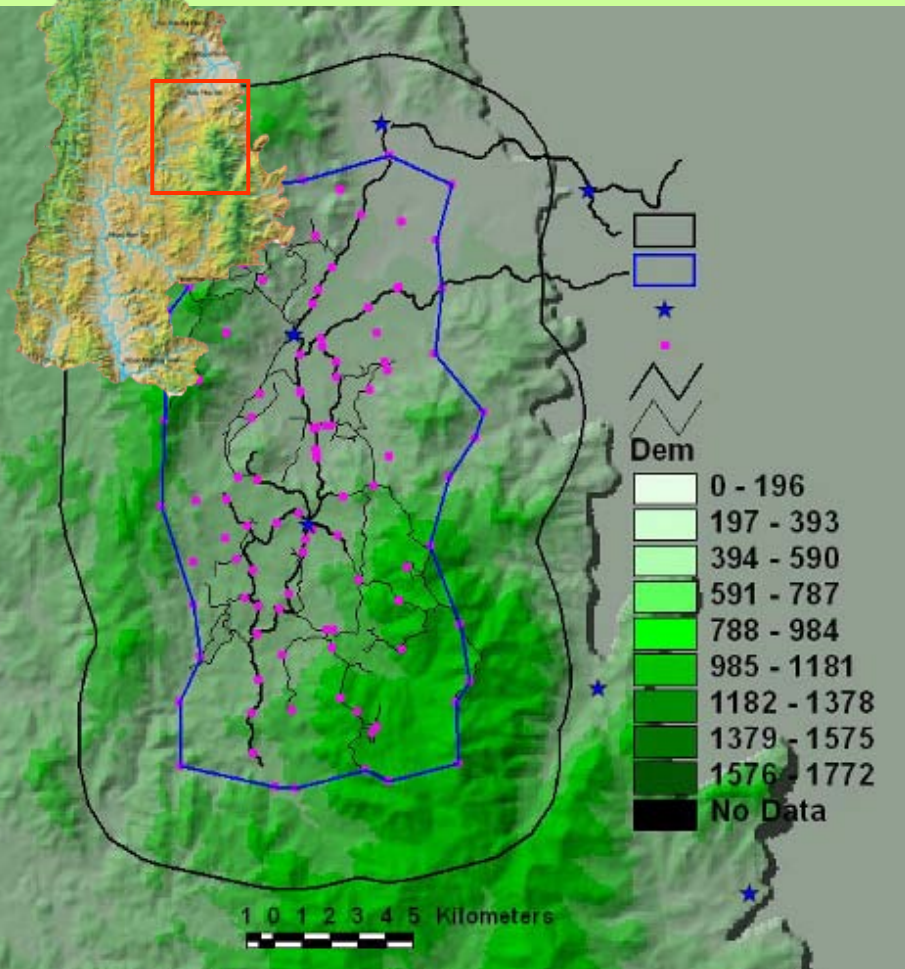
- Estimating **relative abundance** using **standardized indices** of tiger and prey abundance at priority landscapes

- Estimating **absolute densities of tigers and prey** at source sites

- Estimating rates of survival, recruitment and population change over time and study on ecology through long-term studies



SAKSIT'S TRAPPING SETUP



Trapping duration: Feb. 2004- Feb. 2005

No. of camera traps: 22

Trapping locations: 103 locations

Trap Effort: 1, 509 Trap-days

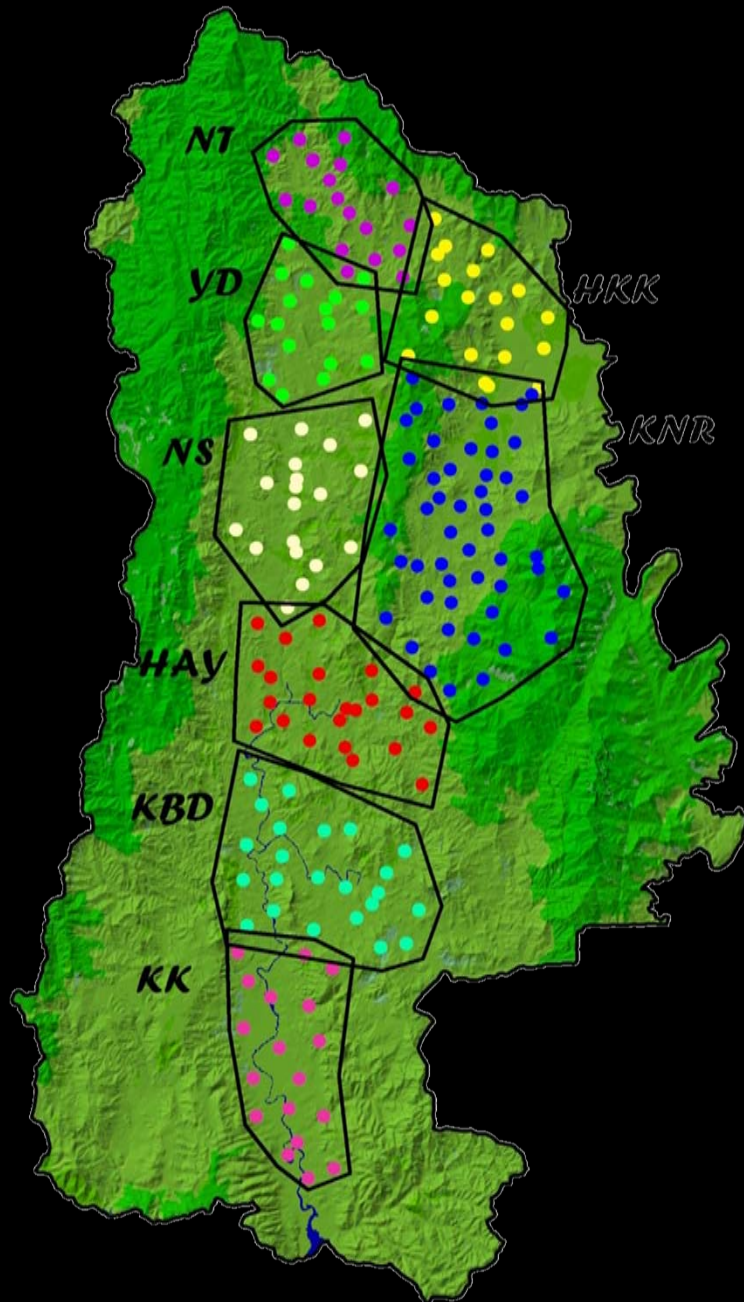
No. of tiger captured: 15 adults

Effective sampled area: 477.2 km²

TIGER DENSITY: 3-4 T/100 sq.km.



TIGER MONITORING IN HUA KHAKHAENG 2011



22Apr - 16 May 2011
46 locations

3 -19Apr 2011
20 locations

3 -21 Apr 2011
18 locations

11 - 29Mar 2011
15 locations

11 - 28 Mar 2011
15 locations

17 Feb - 7 Mar 2011
23 locations

8 - 25 Jan 2011
23 locations

26 Jan - 12 Feb 2011
20 locations

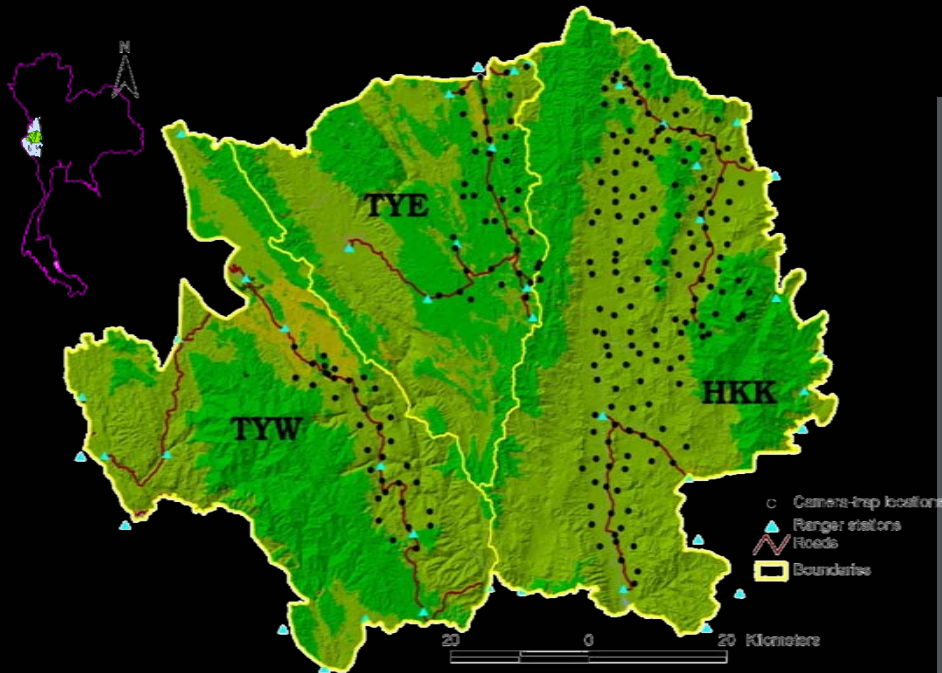
1st PRIORITY SOURCE SITE

TIGER MONITORING

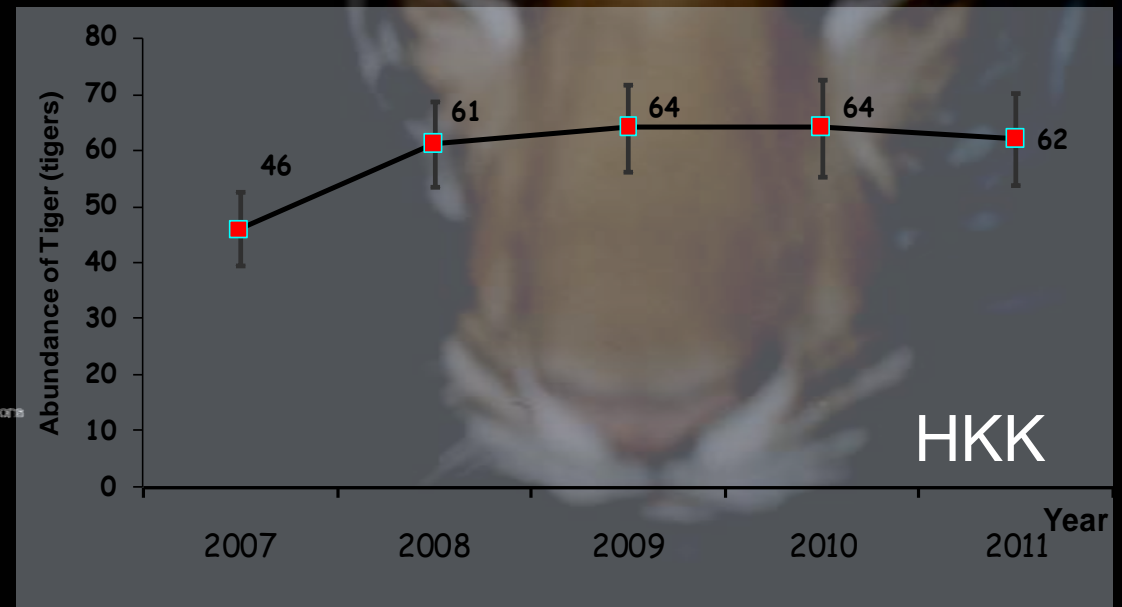
Technique:

- Camera trapping annually
- Capture analysis

Site	Period	Captured Individuals	Tiger Density (inds./100 km ²)
HKK	2011	33	2.30 ± 0.28
TYE	2010	4
TYW	2009	5	1.10 ± 0.35

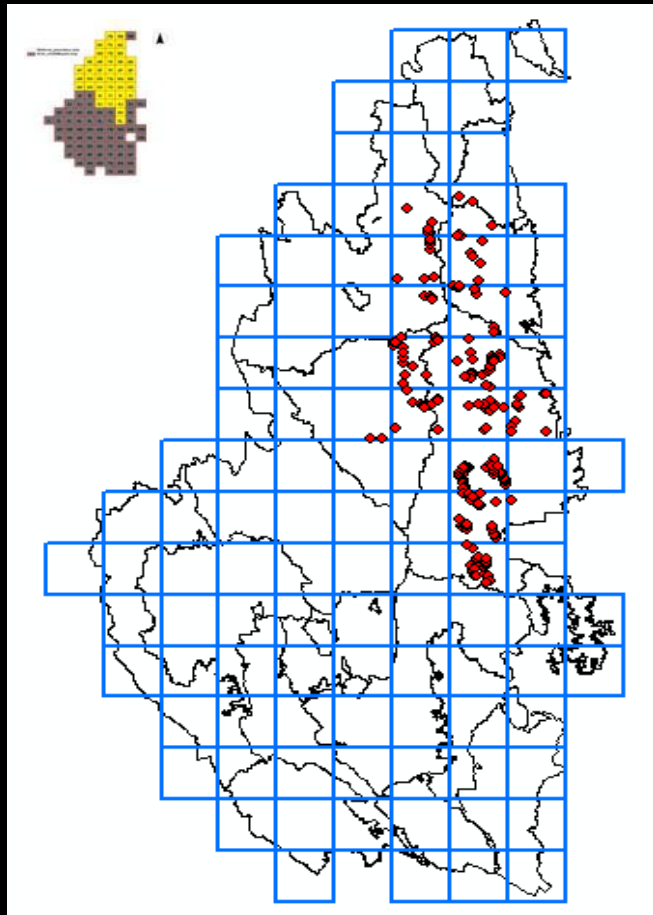


(Huai Kha Khaeng & Thung Yai WS)

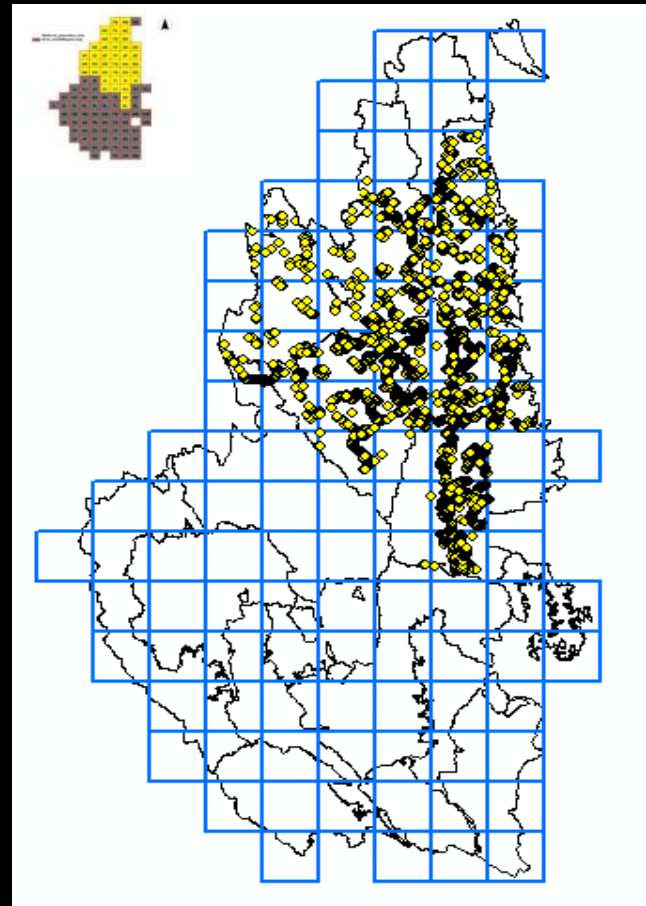


MONITORING TIGER & PREY

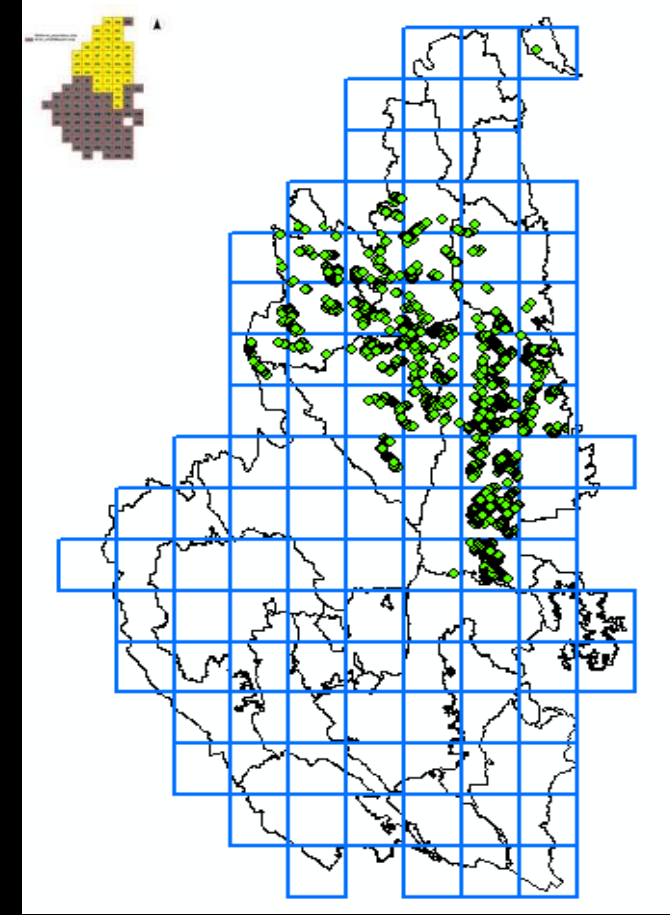
Tiger



PREY



Elephant



Update 11/07/2554

2nd – 3rd PRIORITY LANDSCAPE

MONITORING TIGER & PREY

Technique:

- MIST-based SMART patrol system
- Small-scale camera trapping in key core areas

